



**WOLDUMAR**  
for the naturally curious



## Venues

### **Woldumar Nature Center**

5739 Old Lansing Rd  
Lansing, MI 48917-8503

#### **Phone**

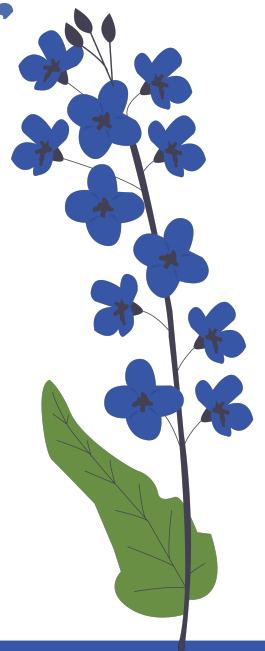
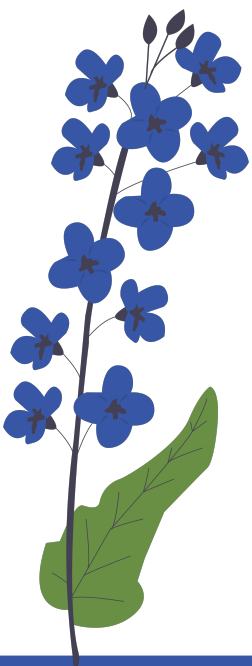
517-322-0030

#### **Hours of Operation**

Monday – Friday: 9AM – 5PM

Saturday: 10AM – 5PM

Sunday: 12PM – 3PM



# Venue Opportunities

Host your next event in one of our:

- Outdoor facilities in a natural setting among the trees.
- Sheltered indoor spaces.
- Combination of various areas.

With a variety of options to choose from, we have ideal setting for your unique event that will be remembered for years to come.



**Follow Us on Social Media:**



# R.E. Olds Anderson Rotary Barn

## Hal & Jean Glassen Memorial Auditorium

**Features:** Perfect for large gatherings and celebrations, radiant heating, a staging area, access to the deck and more.

**Location:** Second floor (accessible by stairs and elevator)

**Capacity:** Up to 150 people

## Conference Classroom

**Features:** Reminiscent of the building's early days as a dairy barn, includes barn doors that open onto a large patio with picnic tables.

**Location:** First floor

**Capacity:** Up to 75 people

## Nature Study Classroom

**Features:** Intimate space for small groups or a dressing space for special events

**Location:** first floor

**Capacity:** Up to 12 people



## Moon Log Cabin and Herb Garden

With its popular, rustic atmosphere, the Moon Log Cabin and Herb Garden is a popular location for vow renewal ceremonies and small weddings.

**Capacity:** 150 guests



## Walnut Glen Amphitheatre

Perfect for private weddings, the serene location of the Walnut Glen Amphitheatre has a steady stream, a forest backdrop and is just a short walk from the barn.

**Capacity:** 147 guests



## Sunrise Pavilion

With a covered patio and breathtaking view of nature, the Sunrise Pavilion is ideal for large groups such as weddings and concerts.

**Capacity:** 20 people can be seated under the roof, up to 250 people can be seated on the lawn



## Visitors Center Rock Room

This indoor space is well-suited for youth education, including features such as annexed restrooms and a kitchen.

**Capacity:** 40 people



## All Venues Include:

- The set up and tear down of up to 150 tables and 300 chairs inside the rental space.
- AV equipment.
- Handicapped accessible restrooms.
- Kitchenette with a refrigerator and sink in the barn.
- On-site event coordinator.

## Site Permits

Outdoor vendors providing any for-profit service on Woldumar property are required to submit a site permit at least 7 days in advance. Contact us for more information.

## Venue Tours Available by Appointment

Call 517-322-0030 or email [rentals@woldumar.org](mailto:rentals@woldumar.org) to set up an appointment

