



WOLDUMAR

for the naturally curious



Woldumar Nature Center

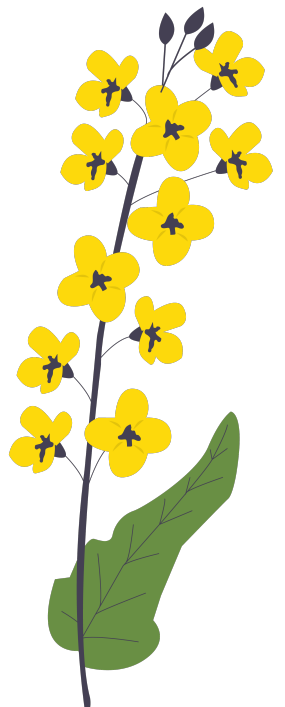
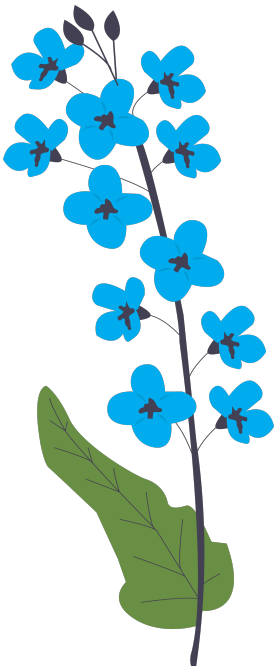
5739 Old Lansing Rd
Lansing, MI 48917-8503

Phone

517-322-0030

Hours of Operation

Monday – Friday: 9AM – 5PM
Saturday: 10AM – 5PM
Sunday: 12PM – 3PM



About Us

Our mission is to educate people about the natural environment.

From our school programs and various camps, vast trails for hiking and skiing, rental facilities for event planning and much more, **there is something for everyone to explore at Woldumar.**

More than 5 miles of trails await you on over **180 acres** of woodland, prairie, river-side and pine forest – we invite you to explore anytime between dawn and dusk, 365 days a year.

It's a cause and a community.



Follow us on social media!



Camps at Woldumar

We give youth the opportunity to explore and discover the natural world in a fun, safe, and nurturing environment. We've been hosting camps for 50+ years!

Experience science as it comes to life!
Form lasting friendships.
Explore and discover the natural world.

Summer

Camp Discovery welcomes students to explore the forest, wetland and prairie habitats as a playground and science lab.



Spring Break

Leave winter behind and **SPRING** into adventure. With five themes to choose from, there is something for every camper to discover in our half and full day camps.



Winter Break

Get up and get outside – even in the snow! Campers experience and experiment outside every day. They explore winter science, animals and history.



Trails

Explore more than five miles of trails through woodlands, wetlands, prairie and more! Our trails give you the opportunity to immerse yourself in nature.



Accessible Trail

The blue trail covers terrain that is flat and has no stairs or hills, but the trail does include grassy tufts and roots. It winds through meadows and light woodlands. It gives individuals who may have varying mobility needs an opportunity to enjoy nature on their own terms!

Trails open daily dawn to dusk. Trail Fee: \$2 per person; FREE for Members



TRAIL RULES:

- Foot Traffic Only (No Bikes or motorized Vehicles)
- No Smoking or Alcohol Permitted
- Pets must be on a LEASH
- Leave No Trace

Venues

Host your next event in one of our:

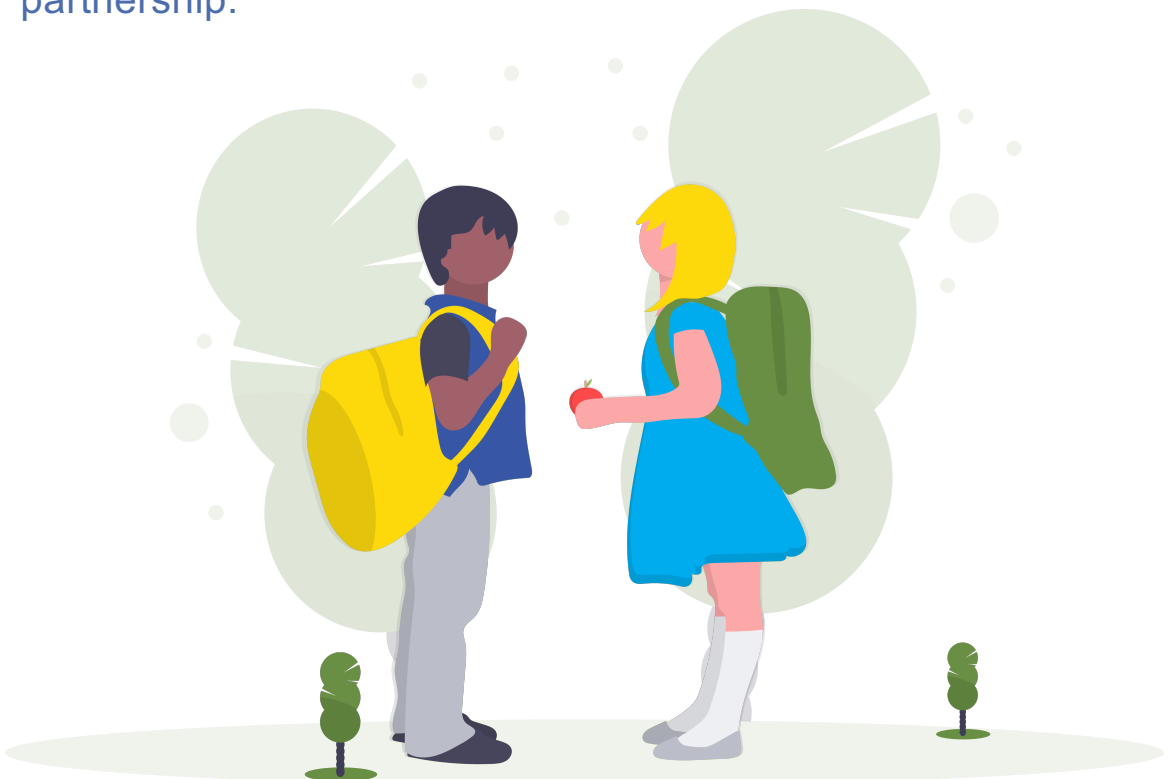
- Outdoor facilities in a natural setting among the trees.
- Sheltered indoor spaces.
- Combination of various areas.

With a variety of options to choose from, we have ideal setting for your unique event that will be remembered for years to come.



School Programs

Get your students outside and excited about science and nature! Learn about plants, animals, history, and habitats from experienced Naturalists. Engage in interactive lessons and hikes in our school programs or LEARN517, a homeschool partnership.



Get Involved

Join a community that is committed to environmental education and conservation.

To become a volunteer, visit

woldumar.org/volunteer.php



**Scientific knowledge uplifts,
encourages and inspires.**



The Woldumar Nature Association values a diverse and inclusive community. We do not and shall not discriminate in any of our activities or operations on the basis of race, skin color, religion, creed, gender, gender identity or expression, age, national origin, ancestry, disability, marital status, attractional orientation, or military status.